

# Installation Instructions

**IMPORTANT: Read all instructions before commencing installation.** The HWTA Home Edge Kinetic Water Energiser is designed to be installed to the main inlet cold water supply to the home. It is an in-line device and it is recommended to be installed by a licensed Plumber. Do not install on to any hot water line. This device is designed for underground installation away from sunlight only. Should above ground installation be required, the device must be completely enclosed in a suitable enclosure to shield it from direct and indirect sunlight. The device can be installed in either a vertical or horizontal orientation.

**Phone: 07 3286 6866**

**Email: info@hwta.com.au**

**Web: www.hwta.com.au**

**IMPORTANT: It is recommended this system be installed by a licensed plumber, according to local plumbing codes on the cold water line. In regions where the supply pressure exceeds 750kPa, a pressure reducing device MUST be installed at the inlet side of the device.**

## Step 1

Locate the existing main inlet cold water supply line to the house inside the property boundary and establish a suitable installation location (see Figures 1 & 2).

## Step 2

Turn off the water supply to the house. Excavate around the supply line, taking care not to damage the pipe. Ensure you have at least a 600mm length of pipe exposed and you dig a further 100-150mm below the pipe, in order to have enough room to install the device.

## Step 3

Carefully cut and remove a section of the pipe to allow installation of the device in-line. Install approved plumbing fittings to both cut ends of the supply line to mate with the 3/4" BSPT tapered thread of the device.

**NOTE: Measure the section to be cut away carefully, taking into account, the size of the fittings being used.**

## Step 4

Install the device, ensuring the 'direction of flow' marker on the device is aligned correctly (see Figure 4). Use thread tape on all joints and be sure not to over-tighten connections.

## Step 5

Turn on main water supply to property and observe for leaks. If leaks are apparent from fittings, turn off water supply and rectify.

## Step 6

After the device is installed and connections are observed to be sound, fill the excavated area ensuring the device is well supported underneath.

Figure 1

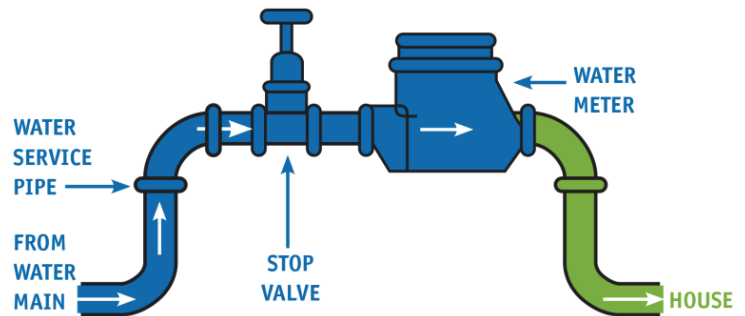


Figure 2

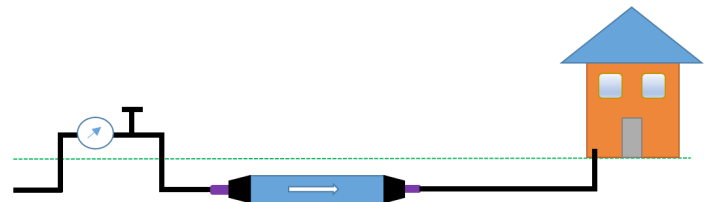


Figure 3

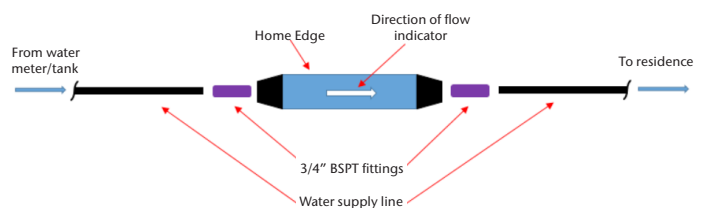
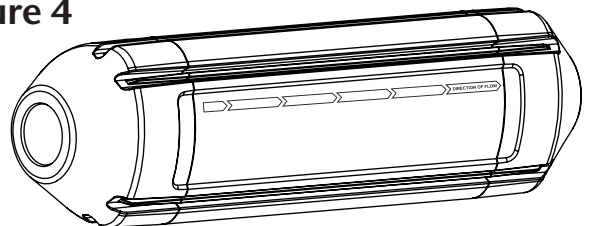


Figure 4



## Use Guidelines

- Maximum operating pressure: 750 kPa
- Minimum operating temperature: 5°C
- Maximum operating temperature: 35°C
- Maximum flow rate: 24.75 L/min @ 500kPa